

INTERIOR - EXTERIOR COLORS

The lifestyle of these times was one of simplicity and every American family had a desire to own their own home. There was a strong desire for homes that reflected this lifestyle and away went elaborate designs in favor of more useful and simpler architecture. This collection provides details, photos and colors of wonderful architectural styles that emerged as the West sprang to life.



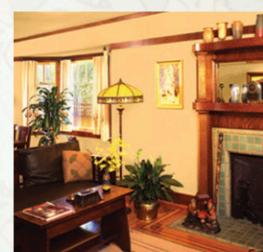
ARTS & CRAFTS
1910 - 1940

JAZZ AGE
1915 - 1940

RETRO
1930 - 1960

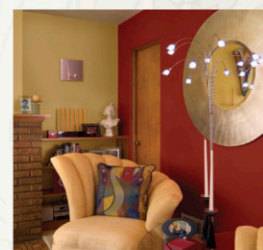
ARTS & CRAFTS - Born out of the English movement of the same name, in America its hallmarks are the simple Bungalow and Craftsman homes of the early 20th century. The color palette was decidedly "autumnal." Two-color bodies were popular while interiors were warm and inviting. This was the era of the kit house and the cozy cottage.

Colors Shown
Exterior - Trim: HL4202-1 Frank Lloyd White • Body: HL4229-3 Ellis Mist • Brick & Door: HL4217-3 Limbert Leather
Interior - Walls: HL4291-2 Bungalow Maple



JAZZ AGE - The period between the two World Wars produced a number of fine architectural styles with a mixture of Colonial, English and Arts and Crafts influences. House colors were typically lighter than previous decades with off-whites, grays and greens, while interiors were often striking in color usage.

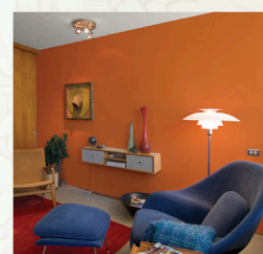
Colors Shown
Exterior - Trim: HL4295-1 Daisy White • Body: HL4297-1 Fitzgerald Smoke • Accent: HL4296-5 Gatsby Brick
Interior - Wall 1: HL4300-3 Saxophone Gold • Wall 2: HL4268-5 Red Hot Jazz



Colors Shown on the Cover Image
Exterior - Body: HL4207-2 Champagne • Accent: HL4227-5 Steiglitz Fog

RETRO - Home styles changed rapidly after the Roaring Twenties. Modern designs with streamlined looks and bolder colors became popular. The Ranch house with all the modern amenities like an attached garage was desired by nearly every American family. Exteriors were simple and interiors showed vibrant color as well as chrome and glass.

Colors Shown
Exterior - Trim: HL4203-1 Moon Doggie • Body: HL4204-2 Martini Olive • Accent: HL4235-5 Graceland Grass
Interior - Walls: HL4306-5 Pumpkin Pie • Ceiling: HL 4304-1 Snow Globe



HISTORIC LIFESTYLES™ OF THE WEST ARCHITECTURAL STYLE INDEX

ARCHITECTURAL STYLE	PERIOD COLORS
VICTORIAN 1850 - 1900	HL4205-3 California Chamois • HL4214-5 Oregon Hazel • HL4222-3 Gold Rush • HL4223-5 Albert Green • HL4226-5 Olympia Ivy • HL4234-5 Victoria Red • HL4240-3 Gould Gold • HL4246-3 Esotiko Lavender • HL4250-3 Slate Blue • HL4253-3 Inness Sage • HL4257-2 Land Rush Bone • HL4261-5 Tiffany Amber • HL4262-2 Gentryburg Gray • HL4267-5 Remington Rust • HL4271-3 Grant Drab • HL4272-5 Frontier Shingle • HL4273-2 Trail Dust • HL4274-2 Whistler Rose • HL4275-3 San Francisco Mauve • HL4276-3 Clippership Twill
ENGLISH REVIVAL 1890 - 1950	HL4212-2 Windsor Toffee • HL4215-5 Cambridge Leather • HL4219-3 Stratford Sage • HL4225-5 Buckingham Palace • HL4232-3 Crown Gold • HL4234-5 Victoria Red • HL4236-1 Windham Cream • HL4243-1 Jacobean Lace • HL4252-3 Tudor Tan • HL4256-3 Eaton Gold • HL4259-3 Hanover Pewter • HL4269-5 Oxford Brick • HL4273-2 Trail Dust • HL4277-1 Cotswold Dill • HL4278-5 Nottingham Forest • HL4279-3 British Khaki • HL4280-2 Norwich Green • HL4281-2 Canterbury Cathedral • HL4282-1 Salisbury Stone
SPANISH REVIVAL 1890 - 1940	HL4201-1 Adobe White • HL4218-2 Coronado Moss • HL4220-2 Del Sol Maize • HL4283-1 Toledo Cuoio • HL4284-5 Seville Scarlet • HL4285-3 Cortez Chocolate • HL4286-1 Alhambra Cream • HL4287-2 Sonora Apricot • HL4288-3 Galleon Blue
ARTS & CRAFTS 1910 - 1940	HL4202-1 Frank Lloyd White • HL4213-3 Bungalow Brown • HL4217-3 Limbert Leather • HL4221-5 Ruskin Bronze • HL4224-2 Ballie Scott Sage • HL4228-5 Ruskin Red • HL4229-3 Ellis Mist • HL4230-5 Arison Tile • HL4233-3 Voysey Gray • HL4239-2 Norman Shaw Goldspar • HL4251-2 Morris Lead • HL4254-1 Maybeck Muslin • HL4258-2 Owl Manner Malt • HL4263-3 Hammered Pewter • HL4266-3 Tobey Rattan • HL4270-3 Ruskin Blue • HL4289-3 Veracruz Green • HL4290-5 Greene & Greene • HL4291-2 Bungalow Maple • HL4292-2 Mercer Charcoal • HL4293-5 Indian Red • HL4294-3 Inglebrook Olive
JAZZ AGE 1915 - 1940	HL4204-5 Leather Chair • HL4207-2 Champagne • HL4208-3 Wooster Smoke • HL4209-3 Speakeasy • HL4210-2 Grant Wood Ivy • HL4227-5 Steiglitz Fog • HL4238-2 Roodster Yellow • HL4241-1 Stocking White • HL4244-3 Charleston Chocolate • HL4245-2 Top Hat Tan • HL4265-3 Scatman Blue • HL4268-5 Red Hot • HL4295-1 Daisy White • HL4296-5 Gatsby Brick • HL4297-1 Fitzgerald Smoke • HL4298-2 Swing Sage • HL4299-3 Trumpet Teal • HL4300-3 Saxophone Gold
RETRO 1930 - 1960	HL4203-1 Moon Doggie • HL4204-2 Martini Olive • HL4211-2 Jitterbug • HL4216-1 Bubble Gum • HL4231-5 Drive-in Cherry • HL4235-5 Graceland Grass • HL4237-1 Cream Cake • HL4242-3 Ritzy • HL4247-2 Grape Soda • HL4248-2 Tricycle Toupe • HL4249-3 Fiesta Rojo • HL4255-3 Butterscotch Sundae • HL4260-2 Daddyo • HL4264-2 Melmac Silver • HL4296-5 Gatsby Brick • HL4301-3 Third Turquoise • HL4302-3 Poodle Skirt Peach • HL4303-2 Bakelite • HL4304-1 Snow Globe • HL4305-2 Silver Lustre • HL4306-5 Pumpkin Pie

View the Historic Lifestyles™ of the West colors at our Online Color Center at www.kellymoore.com

For over 60 years, the Kelly-Moore Paint Company has built a reputation as a premier architectural paint manufacturer by offering customers quality paints and great services. Historic Lifestyles of the West colors should be paired with premium performance paints to achieve the long-lasting beauty expected when your project is completed. For this reason, please consider using these Kelly-Moore best Quality paint families.

	ACRY-PLEX- Kelly-Moore's premium 100% acrylic interior line of designer flat wall paint, luxurious enamels and coordinated primers.
	ACRY-SHIELD- Kelly-Moore's premium 100% acrylic exterior line of weather resistant flat paint, enamels and coordinated primers.
	DURA-POXY+- Kelly-Moore's premium 100% acrylic interior/exterior enamels provide higher performance in residential and commercial settings.



HISTORIC LIFESTYLES™ OF THE WEST

KELLY-MOORE PAINTS™ HISTORIC LIFESTYLES™ OF THE WEST

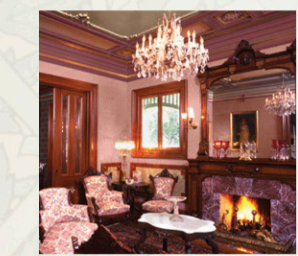
The Historic Lifestyles of the West collection features some classic architectural styles of the 19th century along with several more uniquely American styles of the 20th century. These homes were built during an era when America's population was rapidly shifting into cities and suburbs of the West. The early decades of the 20th century saw the economy booming and income levels rising.



VICTORIAN
1850 - 1900

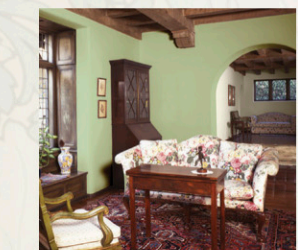
ENGLISH REVIVAL
1890 - 1950

SPANISH REVIVAL
1890 - 1940



VICTORIAN - Encompasses an expansive number of ornately decorated larger homes usually with wide verandahs. Houses often had several siding types and roof gables displaying elaborate wooden decorations. Painting schemes were intricate to show off all the wooden bric-a-brac. Some examples show a dozen colors on one building!

Colors Shown
Exterior - Trim: HL4273-2 Trail Dust • Body: HL4271-3 Grant Drab • Accent: HL4272-5 Frontier Shingle
Interior - Trim: HL4275-3 San Francisco Mauve • Walls: HL4274-2 Whistler Rose • Ceiling: HL4276-3 Clippership Twill



ENGLISH REVIVAL - When America assumed its roll in world affairs, toward the end of the 19th century, we looked to Britain as the model nation. In cities and towns we built half-timber homes and cottages that looked like those in the English countryside. Interiors had large fireplaces and dining rooms straight from a castle. The objective was to make your house look as old and rustic as possible.

Colors Shown
Exterior - Trim: HL4278-5 Nottingham Forest • Body: HL4277-1 Cotswold Dill • Accent: HL4279-3 British Khaki
Interior - Walls: HL4280-2 Norwich Green • Background Walls: HL4282-1 Salisbury Stone



SPANISH REVIVAL - As part of a nostalgic movement begun in the late 19th century, the architecture of colonial Spain came into vogue. The rich heritage of the Mediterranean homes with tile roofs, stucco finishes and ironwork grills was popular nationwide. Softly colored stucco was often framed in bright trim and accent shades. The style has a romantic look to it that captivated the suburban home owner.

Colors Shown
Exterior - Window Trim: HL4285-3 Cortez Chocolate • Body: HL4283-1 Toledo Cuoio
Interior - Walls: HL4286-1 Alhambra Cream



987 Commercial Street • San Carlos, California • 94070 • (650) 592-8337 • 1-888-MR-PAINT • www.kellymoore.com

© 2007 Kelly-Moore Paint Co. Printed in U.S.A. MAO-216-4.07-400M-CCI-SKU-5826-053



The Painter's Paint Store